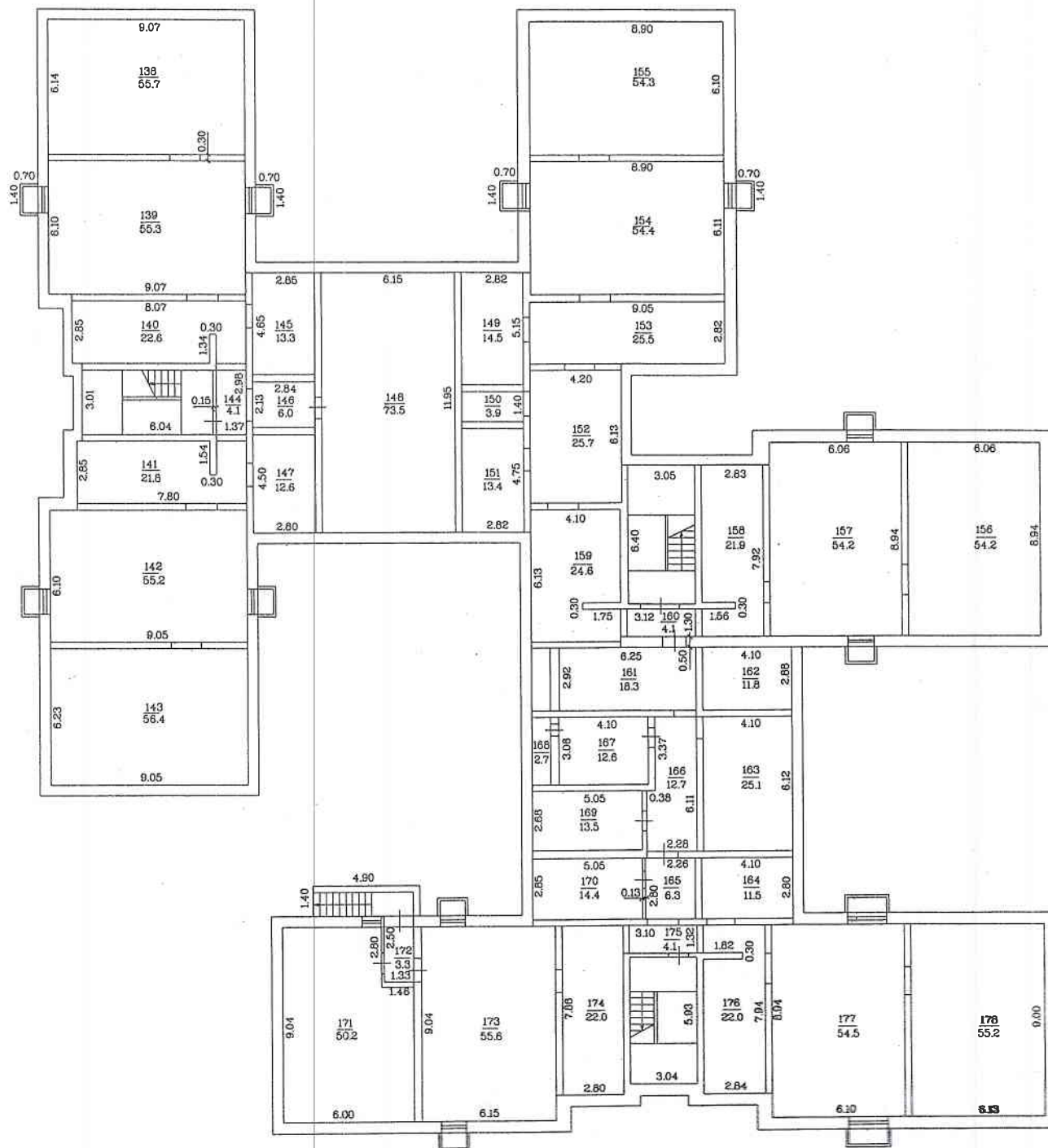


# BUVES 1. STĀVA PLĀNA SHĒMA

Pagrabs

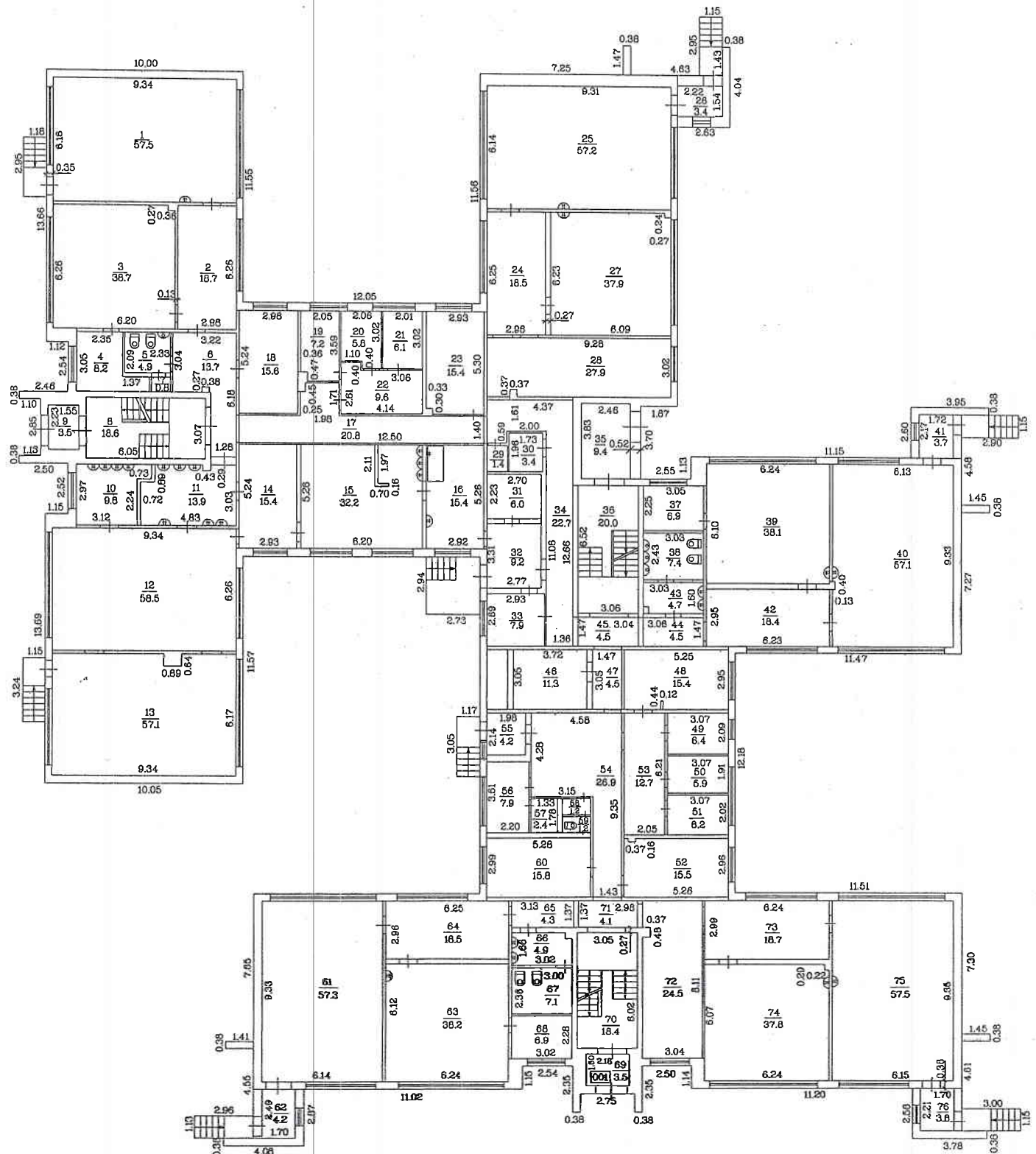
h=2.40



Mērogs 1:200

Buves kadastra apzīmējums

0500 / 008 / 1705 / 001

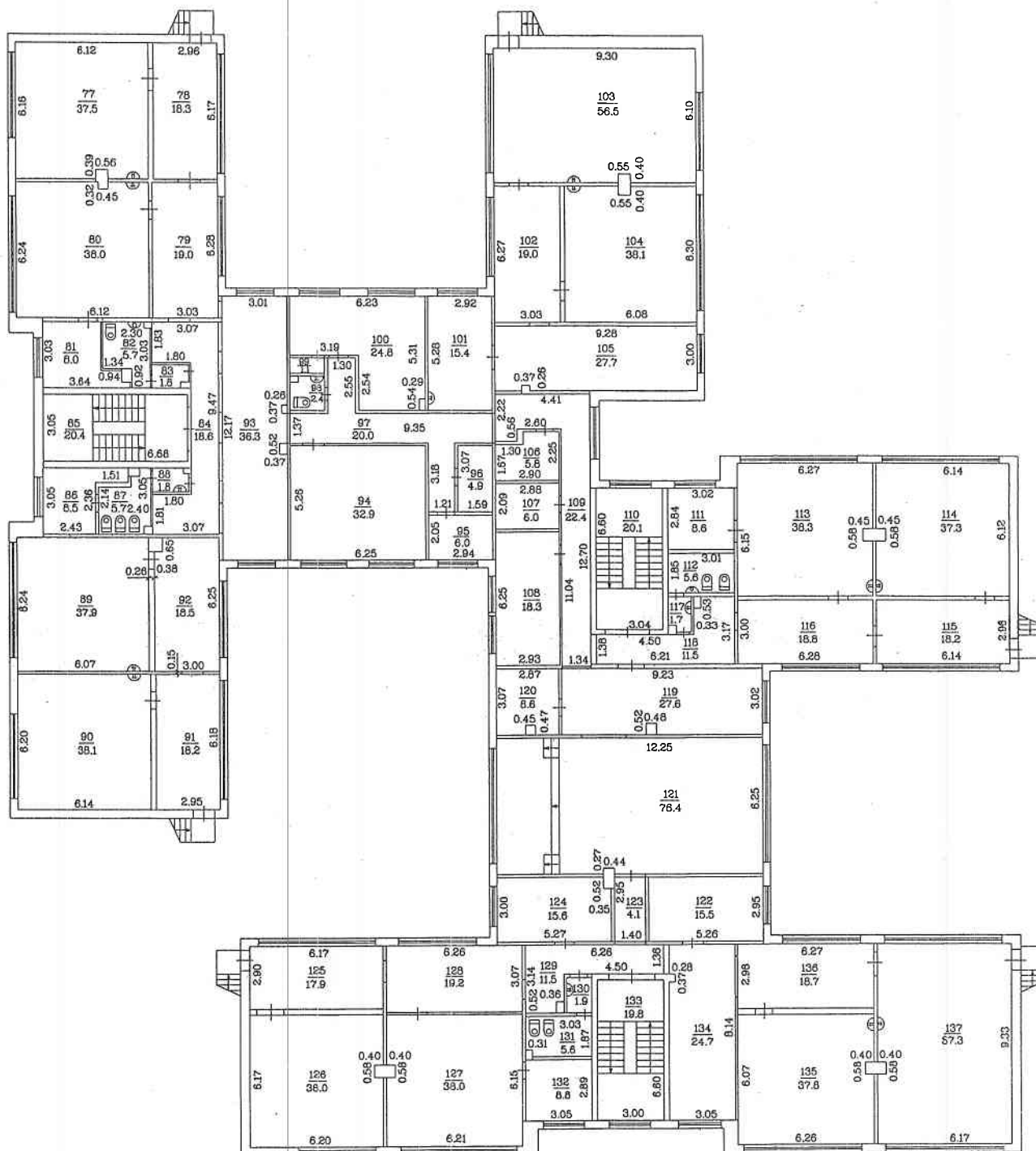
$$h=2.50$$


Mērogs 1:200

Būves kadastra apzīmējums 0500 / 008 / 1705 / 001

# BŪVES \_2.STĀVA PLĀNA SHĒMA

h=2.50



Mērogs 1:200

Būves kadastra apzīmējums

0500 / 008 / 1705 / 001

Architectural site plan of a school complex. The plan shows several buildings with their dimensions and internal room layouts. Key features include:

- Top Building:** Dimensions 11.51, 12.18, 11.47, 11.6, 12.00, 2.50, 2.51, 1.87, 2.55, 10.01, 11.56, 12.08, 11.55, 10.00, 13.66, 2.78, 2.54, 2.52, 1.51, 10.05, 11.50, 13.80, 2.87, 2.8, 13.21, 21.25, 16.13, 34.85, 05000081701.
- Bottom Building:** Dimensions 11.51, 12.18, 11.47, 11.6, 12.00, 2.50, 2.51, 1.87, 2.55, 10.01, 11.56, 12.08, 11.55, 10.00, 13.66, 2.78, 2.54, 2.52, 1.51, 10.05, 11.50, 13.80, 2.87, 2.8, 13.21, 21.25, 16.13, 34.85, 05000081701.
- Central Building:** Dimensions 11.51, 12.18, 11.47, 11.6, 12.00, 2.50, 2.51, 1.87, 2.55, 10.01, 11.56, 12.08, 11.55, 10.00, 13.66, 2.78, 2.54, 2.52, 1.51, 10.05, 11.50, 13.80, 2.87, 2.8, 13.21, 21.25, 16.13, 34.85, 05000081701.
- Right Building:** Dimensions 11.51, 12.18, 11.47, 11.6, 12.00, 2.50, 2.51, 1.87, 2.55, 10.01, 11.56, 12.08, 11.55, 10.00, 13.66, 2.78, 2.54, 2.52, 1.51, 10.05, 11.50, 13.80, 2.87, 2.8, 13.21, 21.25, 16.13, 34.85, 05000081701.
- Left Building:** Dimensions 11.51, 12.18, 11.47, 11.6, 12.00, 2.50, 2.51, 1.87, 2.55, 10.01, 11.56, 12.08, 11.55, 10.00, 13.66, 2.78, 2.54, 2.52, 1.51, 10.05, 11.50, 13.80, 2.87, 2.8, 13.21, 21.25, 16.13, 34.85, 05000081701.
- Other Labels:** "Sporta laukums" (Sports field), "Skola" (School), "2. kr. / Paneli" (2nd floor / Panels), "Minskas iela" (Minsk street), "05000081705", "05000081702", "48.47", "20.25", "51.02", "79.93", "46.97", "16.13", "21.25", "34.85", "05000081701".

Rīves kadastra apzīmējums 0500 / 008 / 1705 /